



Tour Pak Rack® Instructions

- 1 - Locate suitable location on wall. Preferably out of high traffic area.
- 2 - Measure for mounting height (typically top edge is between 3 ½' and 4')
- 3 - Locate two adjoining studs (standard is 16" on center, 2x4 studs measure 1.5" wide). Mark hole location on level plane at 16" centers on both studs.



- 4 - Drill pilot holes using 3/16" drill bit

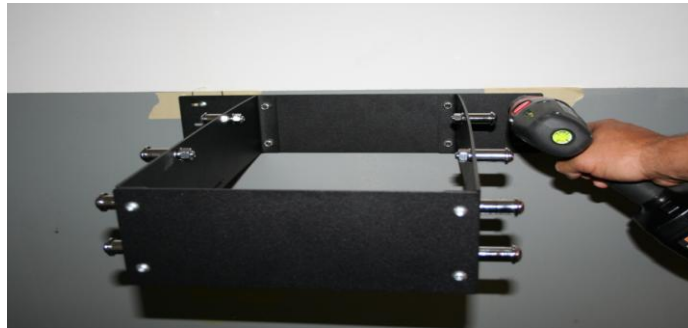




5 - Place Tour Pak Rack in position to loosely secure by top left hole using (1) 2"x14 screw (please note: bottom side of tour Pak Rack is identified by helmet holder slot)



6 - Secure right side using (1) 2" x 14 screw. Tighten left side screw. Check for level.



7 - Drill lower two lower holes and secure with remaining two 2" x 14 screws.





8 - Determine which style Tour Pak mount you are using. Product comes pre-configured for 2009 and newer FLH/FLT detachable products. 2008 and earlier FLH/FLT are displayed below (style A=long, style B=short). Please consult Assembly Key to configure for different year and model.



Style A (long)

Style B (short)

Tour Pak Rack in use



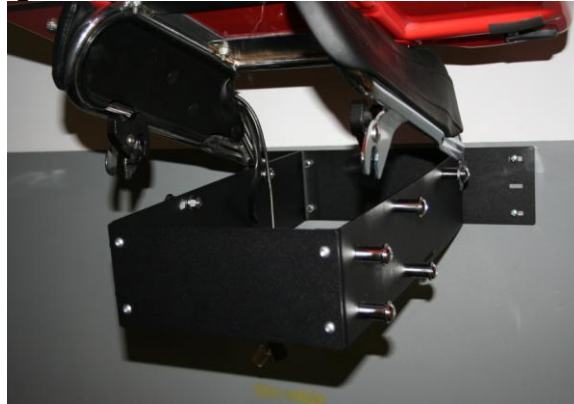


Accessory mounting instructions

To Secure Tour Pak,

1 - Grasp Tour Pak as if mounting on motorcycle

2 - Wall side edge should tilt down to receiving posts. Route wiring harness (if any) to inside opening of Tour Pak Rack to avoid interference



3 - When wall side is secure on posts, lower front edge onto mounting posts, allowing factory latches to lock completely



To Remove Tour Pak

1 - Unlatch locks from posts

2 - Lift front edge to release from rack

3 - Grasp Tour Pak securely and pull straight back from wall



To Secure Back Rest

1 - Back rest hangs upside down, on a slight angle to allow for additional clearance

2 - Hold back rest upside down, with forward edge toward wall. Slide notch over mounting posts.



3 - Raise front edge to forward lower mounts, securely attaching with factory latches.



To Release Back Rest

1 - Securely grasp back rest

2 - Unlatch locks from posts

3 - Lower front edge to release from rack



To Mount Helmets

1 – Place metal loop into cut-out on lower side of rack by sliding in from front to back



Warning:

At no time mount in excess of 50 pounds on Tour Pak Rack.
Tour Pak Rack is not designed to support items other than those items listed; (1) Tour Pak, (1) back rest, (2) motorcycle helmets. Use is at owners own risk.
Hell's Foundry is not liable for improperly installed or used racks, nor responsible for damage to items secured.

ASSEMBLY KEY NOTES

PLEASE NOTE: 1/4" X 20 X 1/2" BUTTON HEAD = "Z" IS USED TO SECURE SIDE PLATES TO BACK PLATE AND ALLOWS FOR WIDTH CHANGES.

WHEN IDENTIFYING POST MOUNT CONFIGURATION A DOUBLE LETTER DESIGNATION SUCH AS 'AA' INDICATES A 2" POST SHOULD BE USED. A TWO INCH POST IS CREATED BY USING THE LONG 3/8" BOLT AND TWO 1" BLACK SPACERS. SINGLE LETTER DESIGNATION SUCH AS 'A' WILL USE ONLY ONE 1" SPACER AND SHORT 3/8" BOLT.

PRODUCT IS PRE-ASSEMBLED FROM HELL'S FOUNDRY TO ACCEPT ALL 2009 FLH/FLT DETACHABLE PRODUCTS (CONFIGURATION 2C)

IF CHANGING TO EARLIER MODEL YEAR FLH/FLTR THERE ARE TWO DIFFERENT LENGTHS OF TOUR PAK MOUNTS INDICATED IN SECTION 8 AS STYLE A AND STYLE B. (CONFIGURATION 1A OR 1B)

FAT BOY AND SOFTAIL
(CONFIGURATION 3D)

WALL=FRONT OF BIKE

ALL ADJUSTMENTS TO RACK CONFIGURATION MUST BE MADE PRIOR TO MOUNTING ON WALL.

ALL SCREW HEADS SHOULD BE INSERTED FROM OUTSIDE OF PRODUCT TO INSIDE OF PRODUCT, ALLOWING ALL NUTS TO BE LOCATED ON INSIDE PERIMETER OF RACK.

ASSEMBLY KEY

Year / Model	Frame Width Position	Post Position Tour Pak	Post Position Back Rest
1997-2008 FLH/FLT Style A (long)	1	B	B, BB
1997-2008 FLH/FLT Style B (short)	1	A	A,AA
2009 FLH/FLT (Factory default)	2	C	CC
Fat Boy / Softail	3	D	D,DD

FRONT, BACK AND SIDE DRAWINGS

